

Understanding 2017 PSAT 10 Results

A PARENT TUTORIAL

A Case Study: Ima B. Student's PSAT 10 Score Report

Take a look at Ima B. Student's sample score report below and on the next page. Use the corresponding information to help you interpret your student's PSAT™ 10 Score Report. (Note: The figures shown here are samples and do not necessarily correspond to actual results.)

What Are Ima's Scores?

Ima's Evidence-Based Reading and Writing score is 410 and her Math score is 530. In Evidence-Based Reading and Writing, Ima's score is approaching the benchmark, but she is not quite on track for college readiness. In Math, however, Ima is exceeding the benchmark and is on track. Test scores, cross-test scores, and subscores can give Ima a better understanding of the areas she needs to work on.

What Are Her Score Percentiles?

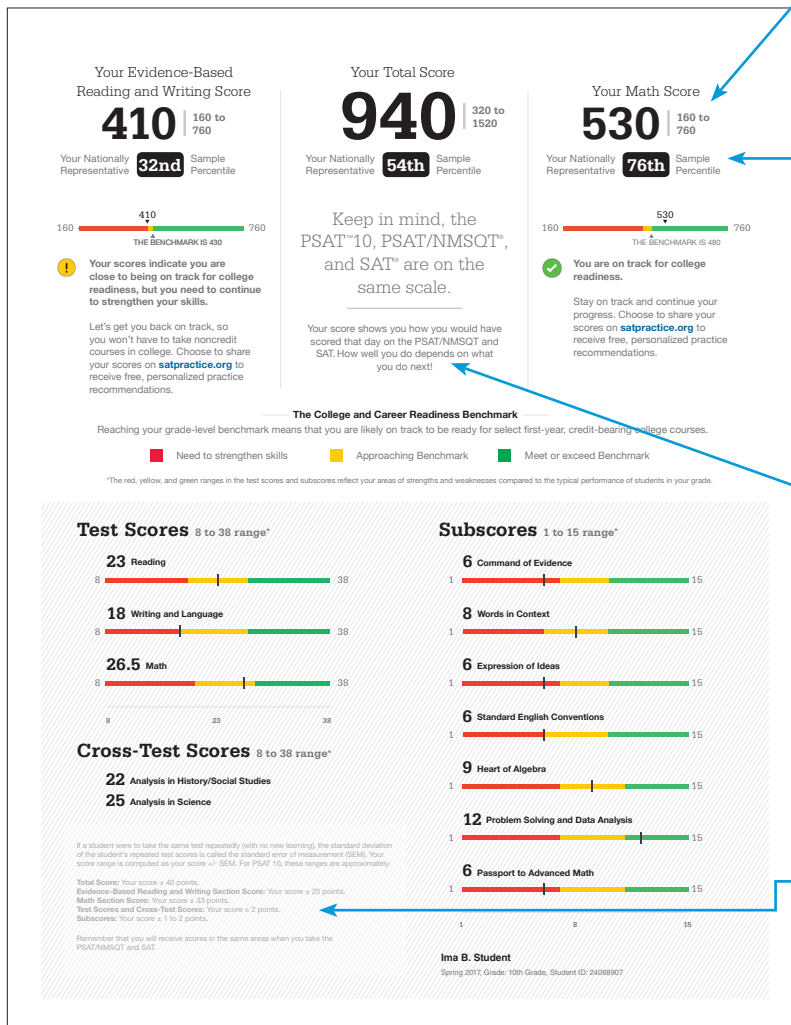
Since Ima is in the 10th grade, the percentiles compare her scores with those of all 10th graders in the nation. In Evidence-Based Reading and Writing, Ima scored as well as or better than 32% of a nationally representative group of sophomores. In Math, she scored as well as or better than 76% of a nationally representative group of sophomores. Additional percentiles are available in Ima's online score report.

How Will Ima Do on the SAT?

The PSAT 10 and the SAT® are scored on a common scale; therefore, if Ima had taken the SAT instead of the PSAT 10 on the same test date, she would have received the same score. When Ima takes the SAT, she will likely have had additional learning from school and practice. Her PSAT 10 results can help Ima focus her efforts in high school to be better prepared for the SAT.

What Are Her Score Ranges?

No test measures precisely what someone knows, and many factors can affect results. That is why test makers think of each score as a range that extends from a few points below to a few points above the score earned.



Your Scores: Next Steps

Additional skills and improvement suggestions can be found in your online score report.

Your score indicates that you are already likely able to:

Reading Test

Improve your skills by focusing on the following suggestions:

- Draw reasonable conclusions from somewhat challenging texts
- Describe the overall structure of a somewhat challenging text
- Identify claims and counterclaims explicitly stated in a somewhat challenging passage
- Revise text as needed to improve the exactness or content appropriateness of word choices within somewhat challenging texts



- Draw reasonable inferences and logical conclusions from challenging texts
- Analyze information presented quantitatively in such forms as graphs, tables, and charts and relate that information to information presented in somewhat challenging text
- Determine how the selection of specific words shapes meaning and tone in a challenging passage
- Use a variety of sentence structures to accomplish a rhetorical purpose such as persuading an audience
- Retain or add information or ideas to a piece of text to support claims or points in challenging text

Writing and Language Test

- Revise text as needed to improve the exactness or content appropriateness of word choices within somewhat challenging texts
- Retain or add information or ideas to a piece of a text to support claims or points in somewhat challenging text
- Revise somewhat challenging text to ensure that information is presented in the most logical order
- Revise text as needed to improve the exactness or content appropriateness of word choices within somewhat challenging texts



- Retain or add information or ideas to a piece of text to support claims or points in challenging text
- Use a variety of sentence structures to accomplish a rhetorical purpose such as persuading an audience
- Revise text as needed to improve the exactness or content appropriateness of word choices within challenging texts
- Retain or add information or ideas to a piece of text to support claims or points in challenging text
- Use a variety of sentence structures to accomplish a rhetorical purpose such as persuading an audience

Math Test

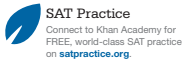
- Interpret a linear inequality in one variable with rational coefficients that represents a context. Select the equation of a line of best fit and interpret the slope and intercept of the line in the context of the situation (when a linear model is appropriate)
- Interpret sample statistics understanding and use margin of error
- Solve and interpret a quadratic function or equation that represents a context and requires multiple steps
- Calculate and interpret frequency distributions using tables and other representational methods



- Determine how a graph may be affected by a change to its equation
- Determine the value of a constant or coefficient for an equation with no solution or infinitely many solutions
- Using a specified model, make a prediction and compare the predicted values with the actual values in the data set
- Within a context, compare the centers of two separate data sets with different spreads
- Determine whether two events are independent given their probabilities
- Use a variety of sentence structures to accomplish a rhetorical purpose such as persuading an audience

Get more next steps online

studentscores.collegeboard.org



Ima B. Student Spring 2017, Grade: 10th Grade

How Can Ima Improve Her Academic Skills?

"Your Scores: Next Steps" are based on Ima's test scores, and on the general skills similarly performing students understand. Ima can see which skills she performed well on and those on which she needs to improve. When she goes online and logs in to the full report, she can see additional skills and improvement steps. Ima can also link her account to Khan Academy® for personalized practice recommendations.

What Are Ima's Next Steps?

Under "Get more next steps online," Ima is directed to studentscores.collegeboard.org to learn how to prepare for the SAT and to see her potential for AP® coursework.

Your Question-Level Feedback

Reading				Writing and Language				Math Test – Calculator				Math Test – No Calculator			
Question #	Your Answer	Difficulty	Subscore	Question #	Your Answer	Difficulty	Subscore	Question #	Your Answer	Difficulty	Subscore	Question #	Your Answer	Difficulty	Subscore
1	D	C	SEC	1	D	C	SEC	1	B	B	PSD	15	C	C	HSS
2	B	B	WOC	2	B	B	WOC	2	A	B	HOA	16	B	B	PSD
3	C	D	SEC	3	C	D	SEC	3	A	B	PSD	17	D	C	PSD
4	C	A	SEC	4	C	A	SEC	4	D	B	HOA	18	B	A	PSD
5	B	D	SEC	5	B	D	SEC	5	B	C	PSD	19	C	A	HOA
6	B	D	COE	6	B	D	COE	6	A	B	PSD	20	B	D	PAM
7	A	D	WOC	7	A	D	WOC	7	B	B	PSD	21	B	C	HOA
8	B	C	EOA	8	B	C	EOA	8	C	C	PSD	22	D	C	PAM
9	A	B	WOC	9	A	B	WOC	9	A	D	PAM	23	D	B	HOA
10	D	C	SEC	10	D	C	SEC	10	D	C	HOA	24	C	B	PAM
11	D	B	COE	11	D	B	COE	11	D	C	PSD	25	B	A	PSD
12	B	C	SEC	12	B	C	SEC	12	A	C	PSD	26	D	D	PAM
13	C	C	SEC	13	C	C	SEC	13	B	C	PSD	27	D	A	HOA
14	C	B	SEC	14	C	B	SEC	14	C	B	PSD				
15	C	B	COE	15	D	C	WOC	15	D	C	PSD				
16	B	A	SEC	16	B	A	SEC	16	B	A	SEC				
17	D	C	SEC	17	B	D	SEC	17	B	D	SEC				
18	B	D	HSS	18	A	D	EOA	18	A	D	EOA				
19	A	B	SCA	19	B	B	SCA	19	B	B	SCA				
20	C	C	SCA	20	C	D	COE	20	C	D	COE	28	65		HOA
21	B	D	COE	21	A	C	COE	21	A	C	COE	29	0, 12		PAM
22	D	B	WOC	22	A	B	WOC	22	A	B	WOC	30	1368		PSD
23	B	B	SCA	23	C	B	WOC	23	C	B	WOC	31	85		HSS
24	D	C	WOC	24	D	C	WOC	24	D	C	WOC				
25	C	B	WOC	25	C	D	SEC	25	C	D	SEC				
26	B	C	SCA	26	A	D	COE	26	A	D	COE				
27	B	C	SCA	27	A	C	EOA	27	A	C	EOA				
28	A	C	COE	28	B	B	COE	28	B	B	COE				
29	D	C	WOC	29	D	C	WOC	29	D	C	WOC				
30	B	A	HSS	30	C	B	SEC	30	C	B	SEC				
31	D	B	COE	31	D	A	EOA	31	D	A	EOA				
32	A	C	HSS	32	B	D	SEC	32	B	D	SEC				
33	C	C	COE	33	D	B	SEC	33	D	B	SEC				
34	A	B	WOC	34	D	B	EOA	34	D	B	EOA				
35	A	B	HSS	35	D	C	SEC	35	D	C	SEC				
36	C	A	HSS	36	B	A	EOA	36	B	A	EOA				
37	B	C	HSS	37	C	D	COE	37	C	D	COE				
38	C	D	HSS	38	A	C	SEC	38	A	C	SEC				
39	C	D	SCA	39	C	C	SEC	39	C	C	SEC				
40	C	B	SCA	40	D	A	WOC	40	D	A	WOC				
41	B	C	SCA	41	D	B	SEC	41	D	B	SEC				
42	B	B	COE	42	A	C	SEC	42	A	C	SEC				
43	A	B	SCA	43	C	B	COE	43	C	B	COE				
44	A	B	WOC	44	B	C	WOC	44	B	C	WOC				
45	A	C	SCA												
46	D	A	COE												
47	C	B	SCA												

Access Code: A02670146P
See the questions, and the answer explanations, online at studentscores.collegeboard.org

© 2017 The College Board. College Board, AP, SAT, and the acorn logo are registered trademarks of the College Board. PSAT is a trademark owned by the College Board. PSAT/NMSQT is a registered trademark of the College Board and National Merit Scholarship Corporation. Visit the College Board on the web: collegeboard.org

Khan Academy is a registered trademark in the United States and other jurisdictions.

Ima B. Student Spring 2017, Grade: 10th Grade

Score Report (Page 2 of 3)

When Should Ima Take the SAT?

As a sophomore, Ima should begin planning when she will take the SAT. Most students take the SAT for the first time in their junior year. By planning now, Ima can ensure that she has adequate time to practice for the SAT. She can register for the test and take advantage of practice resources by visiting studentscores.collegeboard.org.

What Can We Learn from Ima's Answers?

The score report is designed to be used with the student's PSAT 10 test booklet. It lists all of Ima's answers and allows her to see the correct answer and difficulty level for each question. Ima can use her online score report to review the questions she answered incorrectly or omitted and see detailed explanations of why her responses were correct or incorrect.

Score Report (Page 3 of 3)